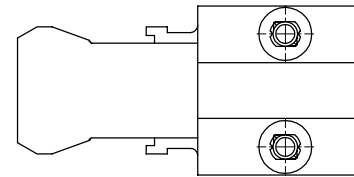
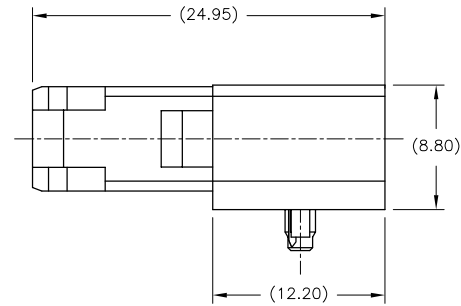
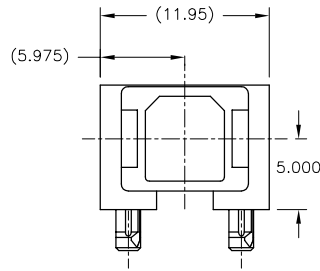
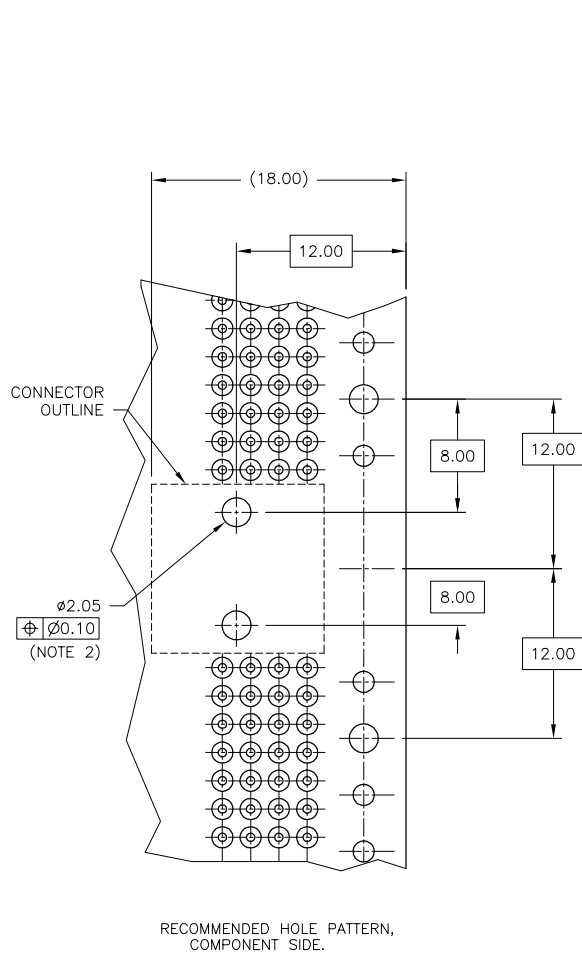


Tous droits strictement réservés. Reproduction ou communication a des tiers interdite sous quelque forme que ce soit sans autorisation écrite du propriétaire. Propriete de c FCI. Droits de reproduction FCI.

All rights strictly reserved. Reproduction or issue to third parties in any form whatever is not permitted without written authority from the proprietor. Property of FCI. Copyright FCI.

PRODUCT NUMBER	STYLE	COLOR
94576-001LF NOTE 3	SC/PC	BLUE
94576-002LF NOTE 3	SC/APC	GREEN



NOTES:

1. MATERIAL: POLYESTER, 15 % GLASS FILLED.
2. INDICATED HOLES ARE UNPLATED.
3. THIS PRODUCT WITH "LF" SUFFIX MEETS EUROPEAN UNION DIRECTIVES AND OTHER COUNTRY REGULATIONS AS DESCRIBED IN GS-22-008. LF INDICATES PRODUCT IS LEAD FREE.
4. THIS PRODUCT IS NOT INTENDED TO BE EXPOSED TO A MANUFACTURING SOLDER PROCESS.

mat'l. code NOTE 1				tolerances unless otherwise specified				CUSTOMER COPY		 www.fciconnect.com		
ltr	ecn no	dr	date	linear	NOMINALS ONLY				projection	title		
A	V40892	SCS	940517		UNLESS NOTED					CMP, SC-SMP HSG		
B	V41287	SCS	940907	angles					 MM	product family FIBER OPTICS		code
C	V10002	JJK	1/10/01							size		-
D	V11448	JJK	8/23/02	dr	STU STONER	940405	scale		A		sheet	
E	V11477	JJK	9/18/01	enr	R. DOUTRICH	940405	1:1		94576		1 of 1	
F	V21044	JJK	6/13/02	chr	STU STONER	940405						
G	V06-0783	DAI	2006-08-29	appd	STU STONER	940405						
sheet index	revision	G										
	sheet	1										

cage code  
22526